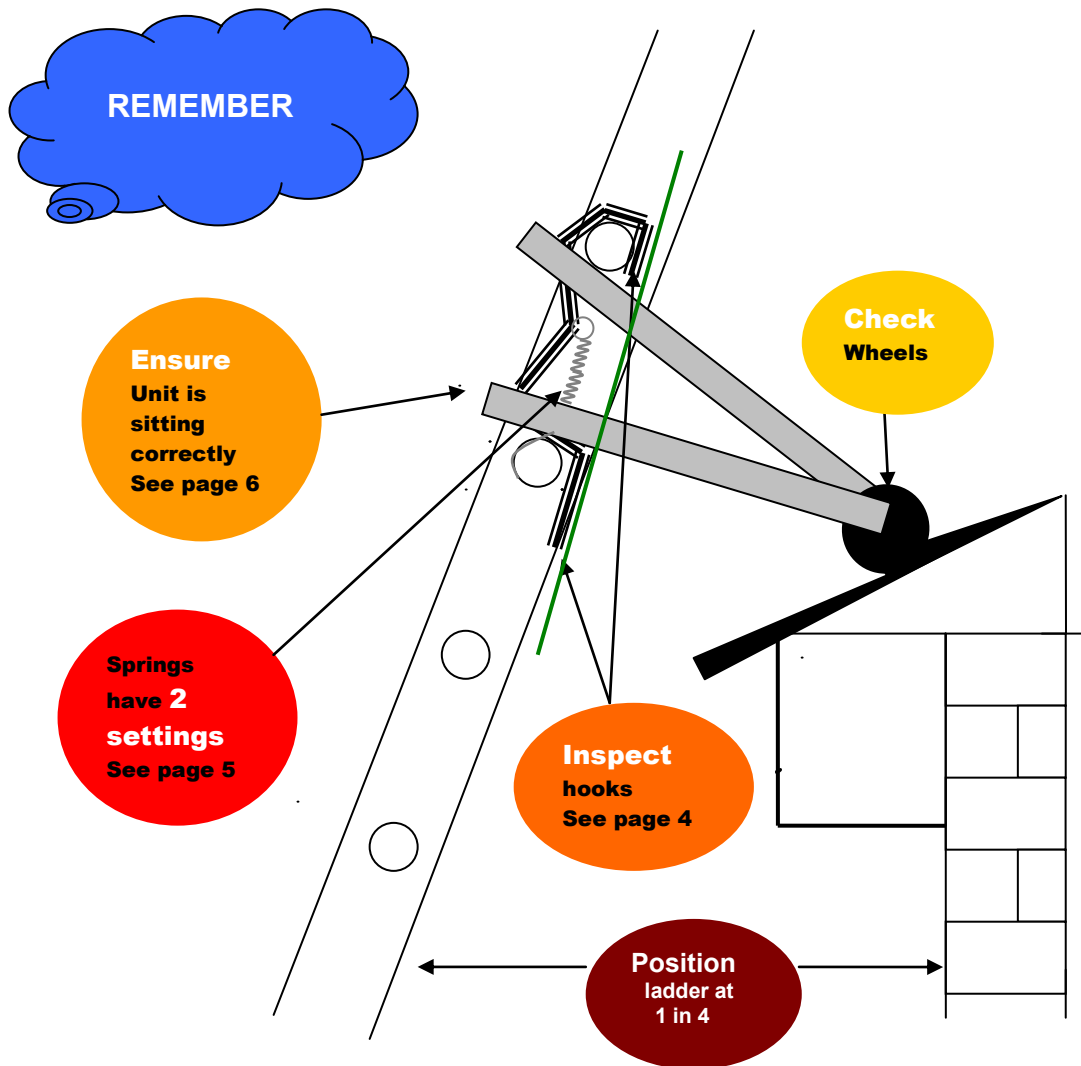


## LADDERFIX MICROLITE INSTRUCTIONS

Read instruction leaflet and safety guidelines carefully.  
All images and drawings are not to scale.



### DO

**Read** instructions  
**Inspect** equipment  
Regularly  
**Adjust** springs according  
to rung pitch  
**Ensure** unit is secure and  
correctly positioned  
**Observe** working at height  
regulations at all times  
**Clean** off debris

### DO NOT

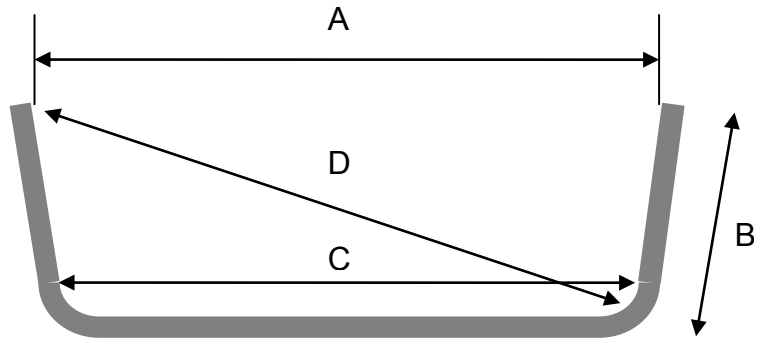
**Re-bend** the Microlite  
**Jump or bounce** your  
ladder top  
**Stand on the limbs** of the  
Microlite  
**Climb beyond** the bottom  
of the hooks  
**Bomb or drop** your ladder -  
see hook inspection page 4  
**Leave your ladder**  
**unattended** to get knocked  
or blown over

## Dimensions and manufacturing specifications

All drawings not to scale

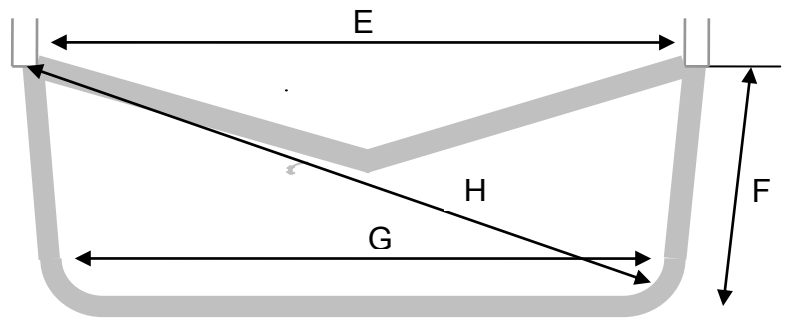
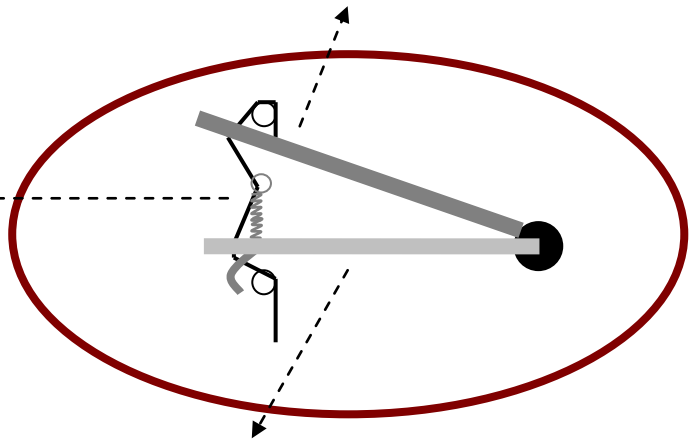
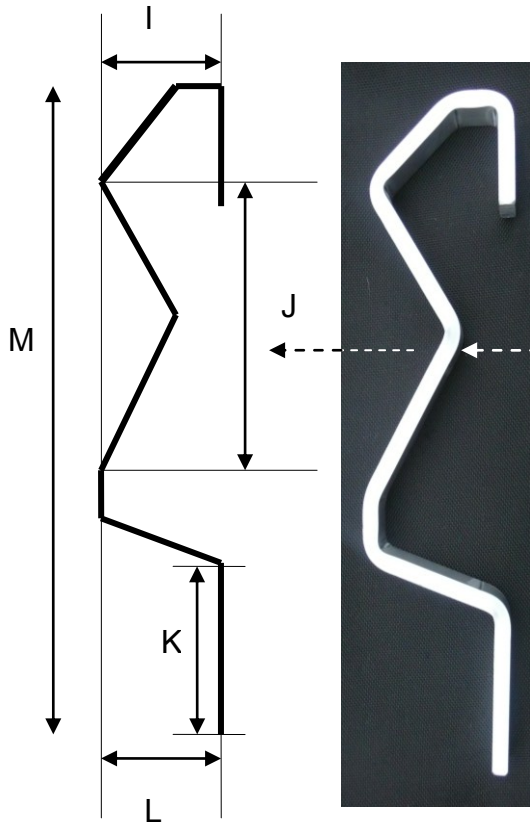
### Plan of top bar

A 585 mm	B 375 mm
C 530 mm	D 620 mm



### Side elevation of hook

I 85 mm	J 180 mm
K 80 mm	L 350 mm
M 350 mm	



### Plan of bottom bar

E 640mm	F 325mm
G 578mm	H 630mm

## **Manufacturing**

The Microlite unit is manufactured for Ladderfix Ltd under licence by Wragg Bros Ltd, Wickford, Essex. They have produced Microlite since 1987 and hold a Quality Certificate ISO 9001.

### **Technical detail:**

Tube: 1 inch diameter x 1.6mm wall (16g)  
Hooks:  $\frac{3}{4}$  inch x  $\frac{3}{8}$  inch  
Wheel Brackets:  $1 \frac{1}{4}$  inch x  $\frac{3}{16}$  inch

All aluminium to grade 6063. T4.

All welds Argon and Tig welded.

Springs are galvanised spring steel.

### **Test Data:**

- 1) HYDRO – the makers of the tubing (The Mill)
- 2) ALLCO – suppliers to Wragg Bros.
- 3) WRAGG BROS – manufacture for Ladderfix

We hold in-house test, specification and chemical certification data provided by HYDRO and ALLCO.

Ladderfix products are covered by various international patents. **Ladderfix Microlite, Leveliser and Safety Base** are trade marks of **Ladderfix Ltd.**

## Inspection

Take care of your Microlite. The Microlite is designed for trade and industrial use but is not indestructible.

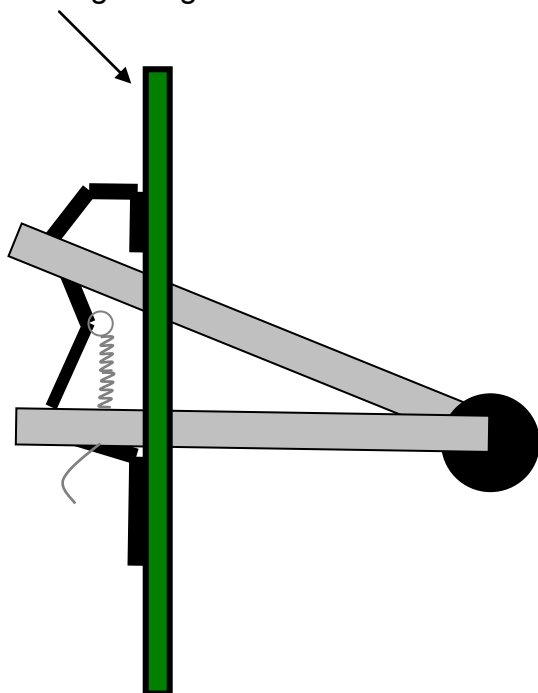
Clean the Microlite. Remove all debris particularly corrosive materials such as cements and plaster.

### Check

- 1) There is no damage such as dents, splits, holes, excessive wear or gross distortion. Very minor distortion is acceptable as long as the Microlite sits evenly and has not been re-bent after damage. **See dimensions on page 2.**
- 2) Both wheels are secure and undamaged and the tyres are clean and not loose, swollen or excessively worn.
- 3) Both spring clip assemblies are secure and springs are not stretched.
- 4) No repairs of any sort have been made.
- 5) Both hooks are in line **see below**. The bottom hook is especially susceptible to damage if the ladder is dropped/bombed with the Microlite in place.

### Inspect hooks

Place a straight edge (ruler or other) against hook ends. Ensure that bottom and top hooks run in line along the straight edge.



### Inspect hooks

Push both hooks against the ladder rungs. The hooks should run parallel with the ladder stile.

